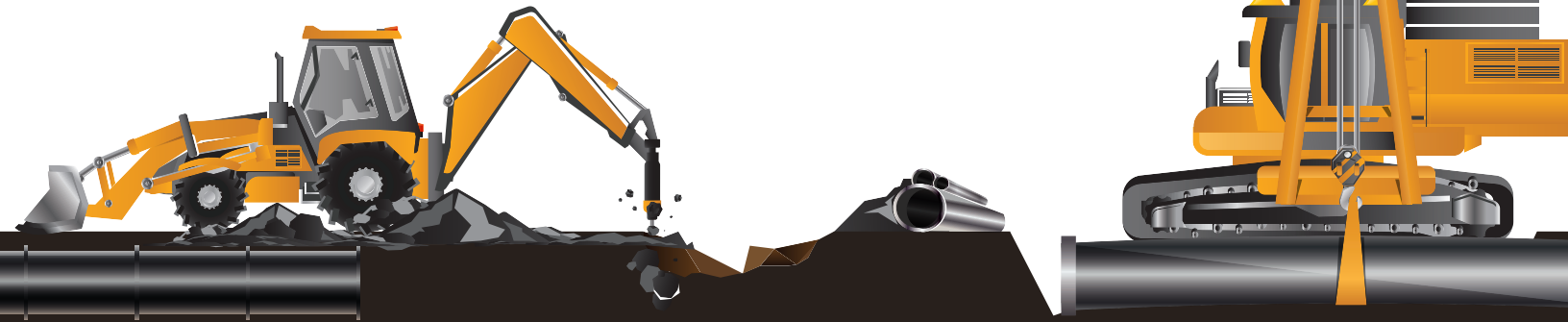


Steps for Getting Underground Utilities into a Structure



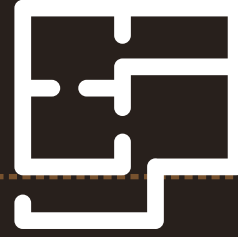
Safely connecting new construction to underground utility lines takes specialized expertise. It's not just a matter of digging a trench between a utility terminal and the new structure. At the planning stage, the project must account for potential hazards, ground composition, and the building's engineering requirements. When it comes to the dig itself, the right equipment needs to be paired with the right operator.

To get the job done on time and on budget while keeping crews safe, follow these steps:



1. Finalize with the Utility

Working with the utility, planners make final decisions about where to locate trenches and their specific parameters—how wide, how deep, and so on.



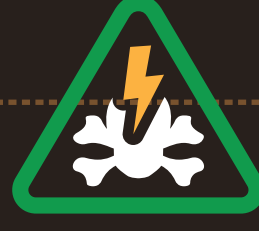
2. Mark the Route

Translate the project's technical drawings into the real world by marking the excavation area with white paint.



3. Call DigAlert

At least two days prior to any dig, projects in Southern California must call DigAlert at 8-1-1.



4. DigAlert Marks Existing Lines

DigAlert's team will mark existing utility lines that may be crossed during the dig and will issue a job ticket. Digs cannot proceed without a DigAlert ticket.



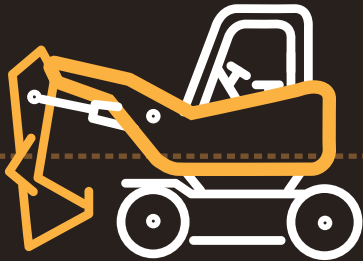
5. Contact Your Excavation Team

Once the path is clear, CALL, TEXT or EMAIL Chamberlain Backhoe Service to get work started.



6. Demolition of Existing Surface

CBS will take care of cutting, breaking out and hauling away asphalt or concrete to clear a path for trenching.



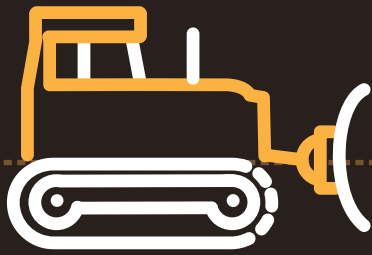
7. Dig the Trench

At last, the dig can start! A skilled operator will work at the pace that's suitable to conditions—quickly when the area is clear of hazards, slowly and carefully when existing utility lines are a concern.



8. Install the New Utility Lines

The excavation team leaves the site clear for licensed contractors to complete the connection from existing terminals to the new structure.



9. Backfill and Compact the Trench

The excavation team leaves the site clear for licensed contractors to complete the connection from existing terminals to the new structure.



10. Resurface the Trench.

To finish the job, CBS repatches the surface asphalt or concrete to leave the worksite looking as good as new.

How We Price a Dig

CBS is your excavation partner. Many of our customers appreciate our turnkey solutions, which bundle services together into a fixed price contract. Others prefer to hire operators and equipment by the hour. Either way, we have you covered.